

Wynncliff Site Plan



Notes:

Pack Cribs:

- 3 - Barn#7 closet (lower-level North)
- 1 - FH #2 closet (MBR)
- 2 - Lodge 1st floor closet in cross hallway
- 1 - Lodge basement classroom closet

1 full crib in FH #7 closet (MBR)

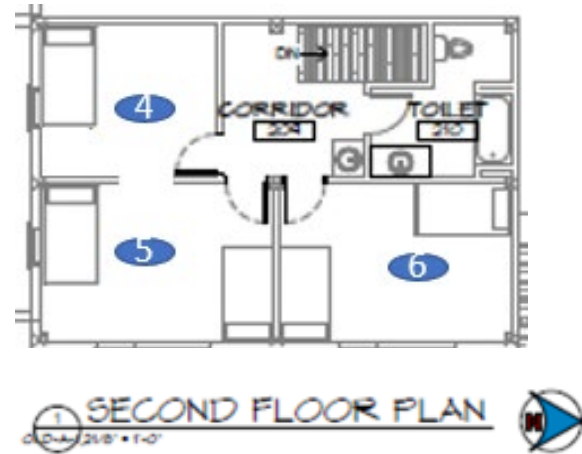
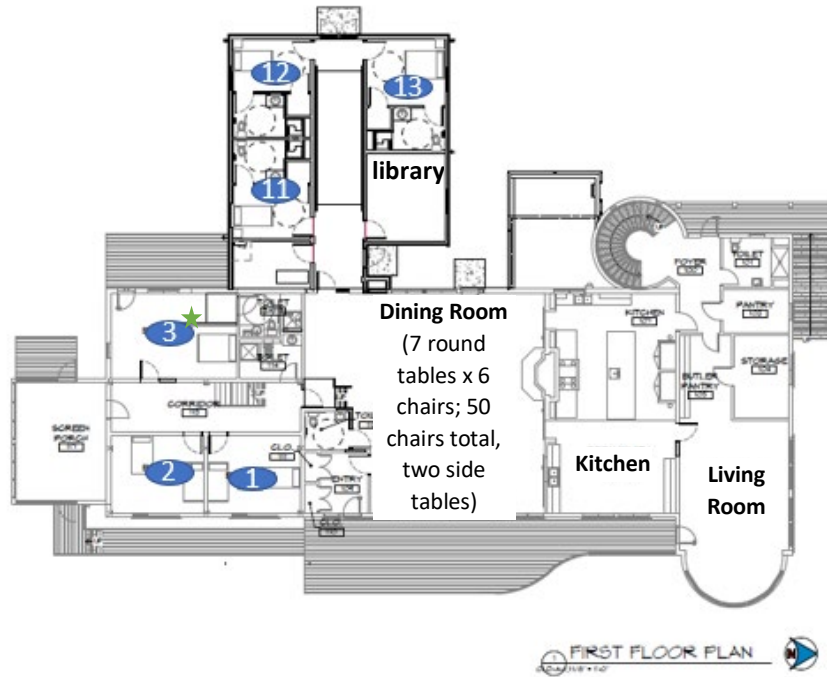
4 highchairs (2 with tray) – in Barn kitchen, under South Barn stairs, in Barn dining room

Rollaway beds: 10 (1-Barn #7 closet, 1-Barn #9 closet, 2-LH basement closet, 2-LH living room closet, 2-LH 2d floor closet, 2 Lodge basement closet)

Sleeping Capacity (56 beds...74 total including sleeper sofas and rollaway beds)

House	Bedrooms	Single/twin	Queen	King	Sleeper sofa	Notes
Chapel	1	1				Not shown in layouts on following pages but may be used as needed
Barn	13	20	4	2	5	sleeper sofas: lower-level common area, office, library, Room #3, Room #10
Lakehouse	7	7	2	1	3	sleeper sofas: 1 in cottage common area, 2 in living room
Lodge	8	10	2			
Farmhouse	5	4	2	1		
TOTALS	34	42	10	4	8	

BARN – South: first and second floor North: first floor

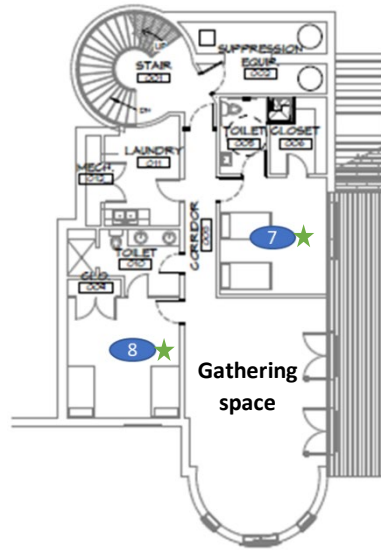


Rm#	Name	Beds		Bath
1		twin	lower bunk	shared in hall, shower
		upper bunk		
2		twin	lower bunk	shared in hall, shower over tub
		upper bunk		
3		king		private, shower
4		lower bunk	#4 & #5 joined by open doorway (fire egress)	shared in hall, shower over tub
		upper bunk		
5		twin		
		lower bunk		
		upper bunk		
6		lower bunk		shared in hall, shower over tub
		upper bunk		
		lower bunk		shared in hall, shower over tub
		upper bunk		

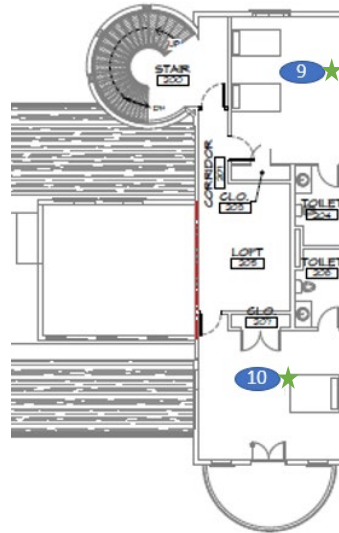
Note: Couch in room #3 and the Library each have a single sized pull-out bed. The couch in the office west of the living room has a single sized pull-out bed.

BARN

North: lower level and second floor



BASEMENT FLOOR PLAN
SCALE: 1/8" = 1'-0"



SECOND FLOOR PLAN
SCALE: 1/8" = 1'-0"

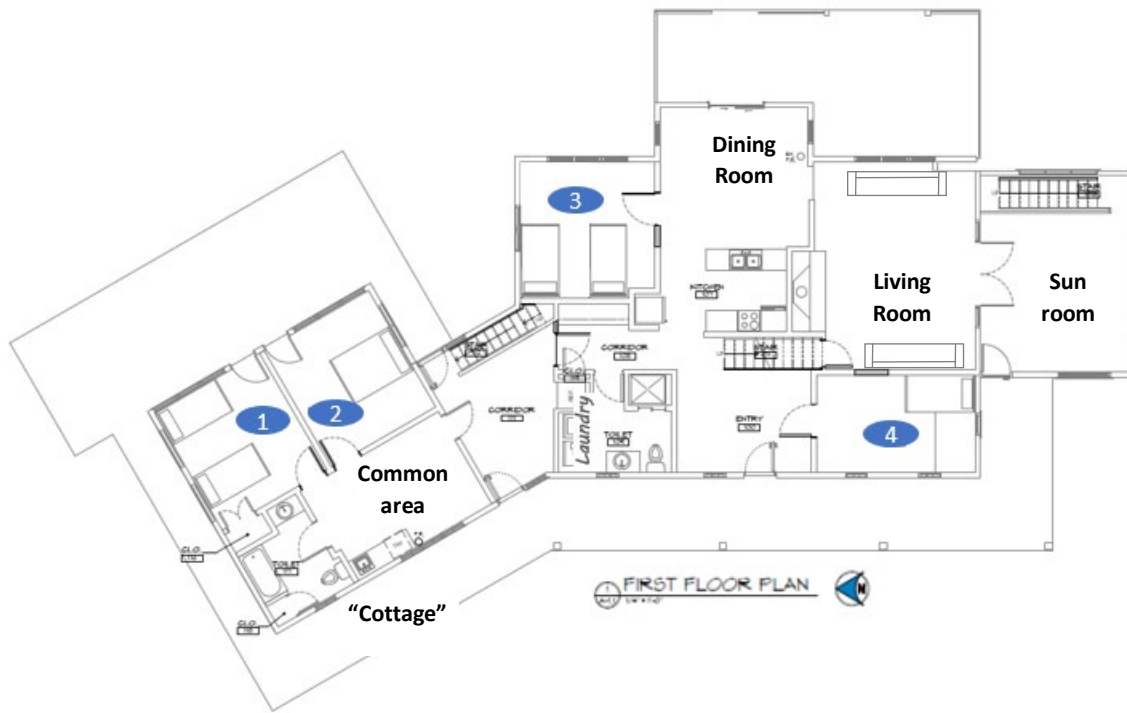
West



Rm#	Name	Beds	Bath
7		twin	private, shower/tub
		twin	
8		twin	private, shower
		twin	
9		twin	private, shower/tub
		twin	
10		king	private, shower/tub
11		twin	private, ADA shower
12		twin	private, ADA shower
13		queen	private, ADA shower

Note: There is one rollaway bed in the closet of room #7. #10 has a queen pull-out couch. Pull-out twin sized couch in the lower level gathering space.

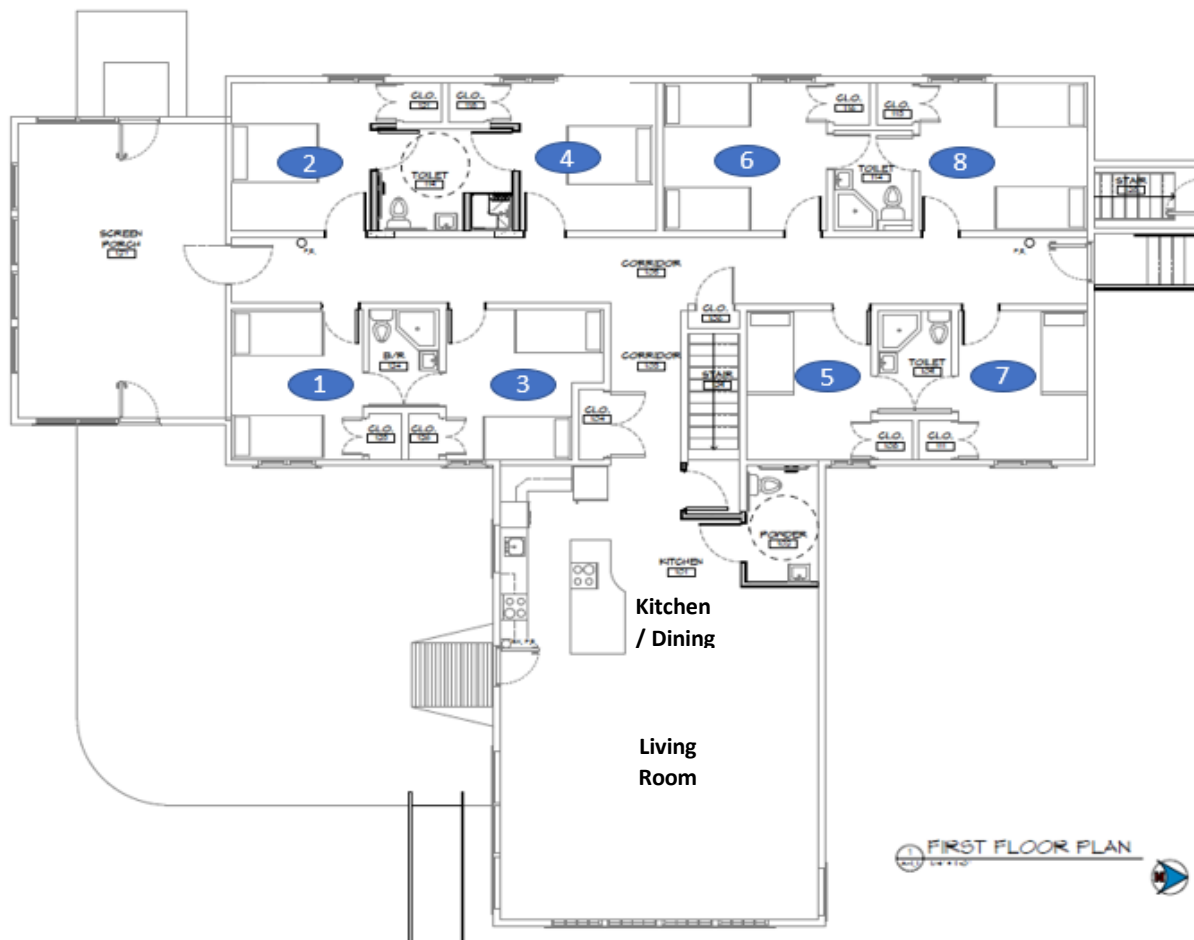
LAKEHOUSE



Rm#	Name	Beds	Bath	Rm#	Name	Beds	Bath
1		twin	shared, shower over tub	5		twin	shared, in hall, shower over tub
2		twin		6		queen	
3		queen	shared, in hall, shower over tub	7		king	private, shower
4		twin					
		twin					

Note: There are two futons in the basement, two rollaway beds in the basement closet, two rollaway beds in the living room closet, two rollaway beds in the upstairs hall closet, both couches in the living room have pull-out queen beds.

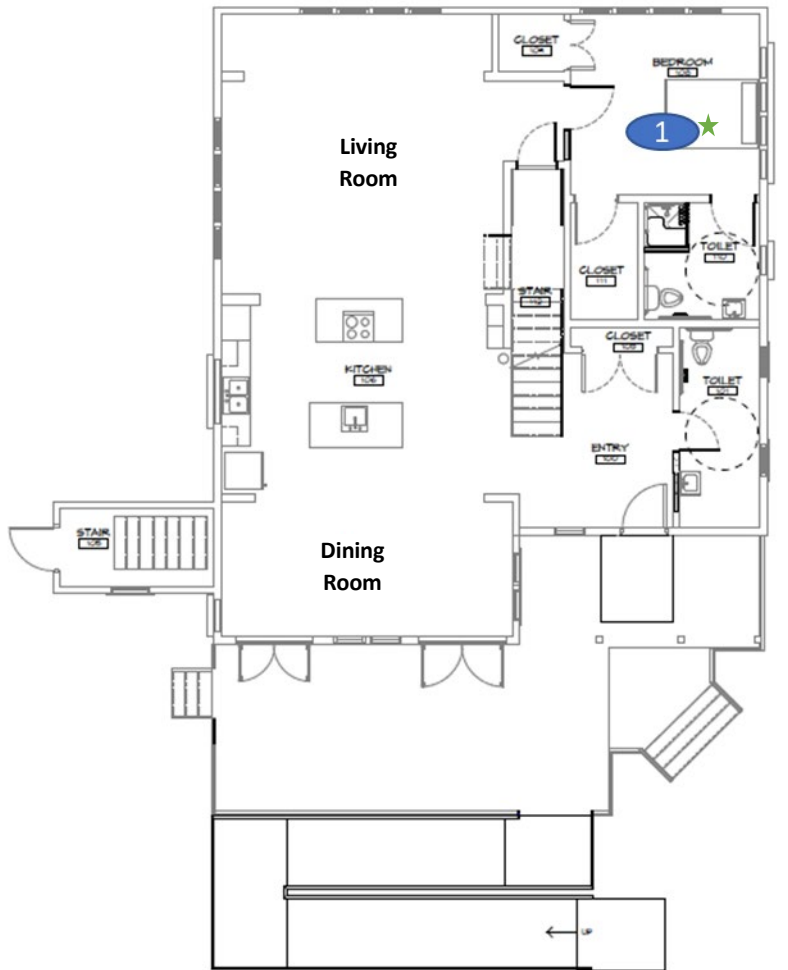
LODGE



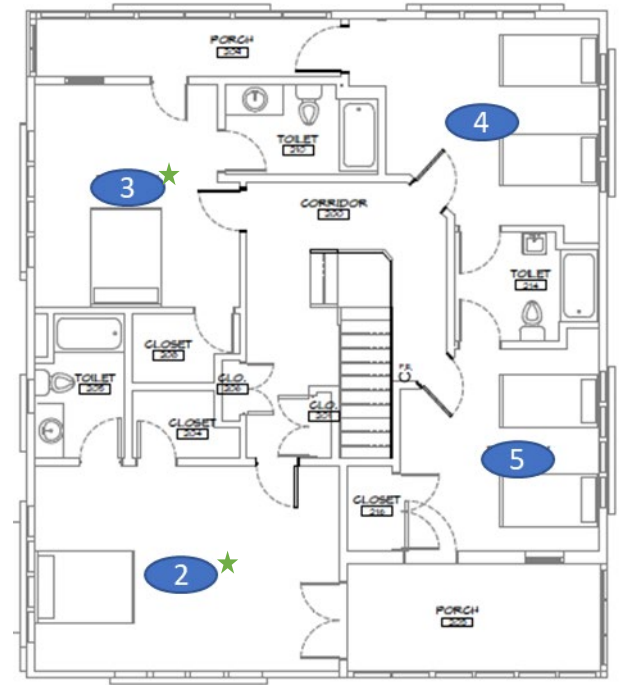
Rm#	Name	Beds	Bath	Rm#	Name	Beds	Bath
1		twin	shared, shower	5		twin	shared, shower
3		twin		7		twin	
2		queen	ADA, shared, shower	6		twin	shared, shower
4		queen		8		twin	
						twin	A/C

Note: There are two futons in the basement, two rollaway beds in the basement across from laundry room.

FARMHOUSE



FIRST FLOOR PLAN
A-1.1 1/4" = 1'-0" N



SECOND FLOOR PLAN
A-1.2 1/4" = 1'-0" N

Rm#	Name	Beds	Bath
1		queen	ADA, private, shower
2		king	private, shower over tub
3		queen	private, shower over tub
4		twin	shared, shower over tub
		twin	
5		twin	shared, shower over tub
		twin	

Note: There are two futons in the basement.